

Morden Road Mitcham, CR4 4DD

£1,750 PCM



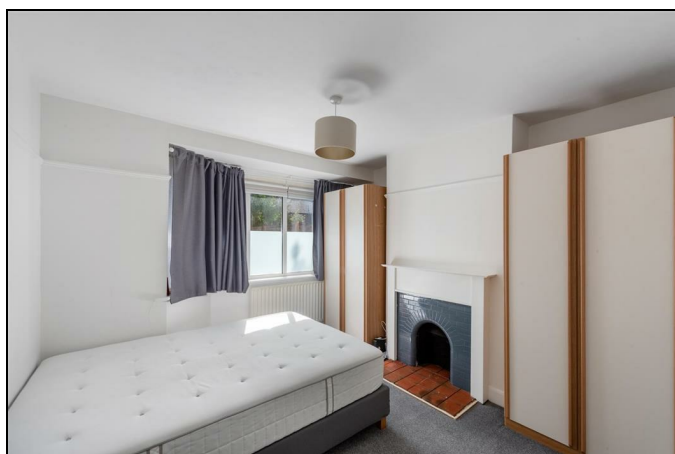
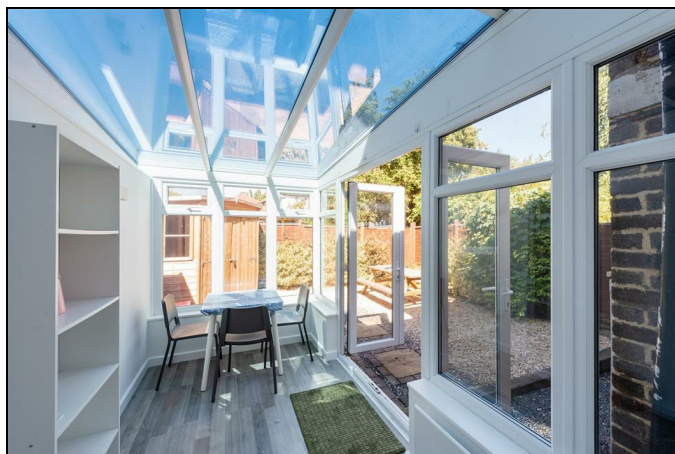
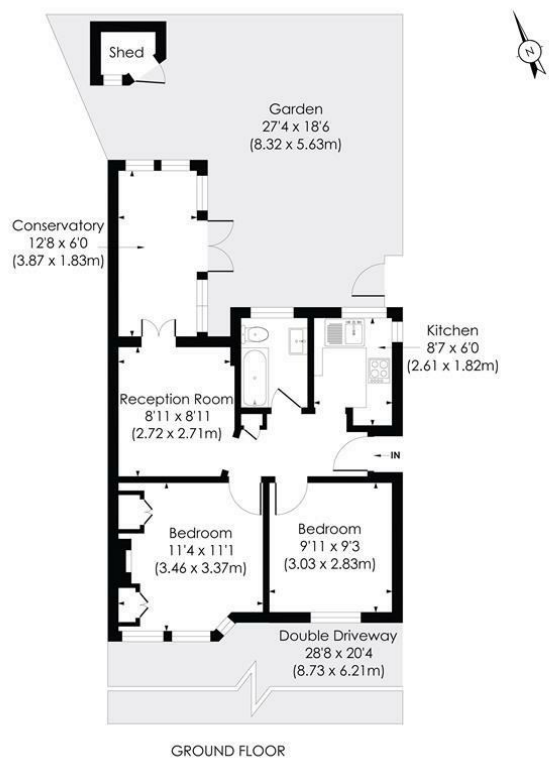
TWO DOUBLE BEDROOM GROUND FLOOR maisonette with PRIVATE GARDEN located close to Morden Hall National Trust Park, and Belgrave Walk tram stop. The property is will be DECORATED prior to occupation and features two double bedrooms, modern kitchen and bathroom, conservatory and private garden. Double glazing and gas central heating.

Morden Road is a 15 minute walk (0.8 miles) towards Morden Tube Station (Northern Line) and amenities EPC band C. Council Tax Band C.

MORDEN ROAD, CR4

Approx. Gross Internal Floor Area

535 Sq. ft/49.72 Sq. m



pixangle
PROPERTY MARKETING

© Pixangle Property Marketing Ltd. info@pixangle.com Tel: 0208 870 2118
This floor plan has been prepared for the purpose of illustration only in accordance with the latest RICS code of measuring practice and is not to scale. All measurements and areas are approximate and whilst every effort has been made to ensure the accuracy of the plan contained here, no responsibility is taken for any error, omission or misstatement.

- Two Double Bedrooms
- Ground Floor Maisonette
- Private Garden
- Part Furnished
- Gas Central Heating
- One Months Advance Rent
- Five Weeks Deposit
- One Week Holding Deposit
- Council Tax Band C
- EPC Band C

Energy Efficiency Rating

	Current	Potential
Very energy efficient - lower running costs		
(92 plus) A		
(81-91) B		
(69-80) C		
(55-68) D		
(39-54) E		
(21-38) F		
(1-20) G		
Not energy efficient - higher running costs		
England & Wales	69	76
EU Directive 2002/91/EC		



Although these particulars are believed to be correct, their accuracy is not guaranteed and they do not form part of any contract.

**Celebrating 30 years
of successful Sales and
Lettings in Merton**

